



## Welcome to ASCLS!

As a Laboratory Professional, you have many affiliations to choose from. We would like to congratulate you on making the decision to develop and distinguish yourself as a professional by becoming part of the preeminent organization for Clinical Laboratory Practitioners.

The goal of this resource is to give a snapshot of what ASCLS has to offer. As with anything, you will get the most out of this professional society by participating! You will see there are many ways to get involved, many resources available, many opportunities to grow and meet amazing people—just like you!

To get started, visit us: [ascls.org](http://ascls.org)  
Connect through the Online Community: [connect.ascls.org](http://connect.ascls.org)  
Access Members-Only Content: [members.ascls.org](http://members.ascls.org)  
Purchase Quality CE: [www.asclsce.org](http://www.asclsce.org)

Be inspired, encouraged and get to know a few fellow ASCLS members by clicking here: [Be A Voice For Your Profession](#)

It is with great pleasure that we welcome to our family!!!

Sincerely,

*Your Fellow ASCLS Members*



## ASCLS Mission:

The mission of ASCLS is to make a positive impact in healthcare through leadership that will assure excellence in the practice of laboratory medicine.

## ASCLS Believes:

- Quality laboratory service is essential to quality healthcare.
- Everyone deserves access to safe, effective, efficient, equitable, and patient-centered healthcare,
- Advancing the laboratory profession advances healthcare.

## ASCLS Core Values:

- Defining the characteristics of competent personnel within the profession and providing professional development opportunities so that practitioners can maintain competency are essential roles of a professional association.
- Enabling laboratory professionals to function at their highest level of competence will contribute to cost effective healthcare.
- Promoting diversity supports the delivery of quality laboratory service.
- Taking a leadership role in standard and policy setting is a core professional responsibility.
- Advocating for quality within the laboratory is essential to the assurance of quality healthcare delivery.



DEFINING  
*Excellence*

## PLEDGE TO THE PROFESSION

As a Medical Laboratory Professional, I pledge to uphold my duty to Patients, the Profession and Society by:

- Placing patients' welfare above my own needs and desires.
- Ensuring that each patient receives care that is safe, effective, efficient, timely, equitable and patient-centered.
- Maintaining the dignity and respect for my profession.
- Promoting the advancement of my profession.
- Ensuring collegial relationships within the clinical laboratory and with other patient care providers.
- Improving access to laboratory services.
- Promoting equitable distribution of healthcare resources.



## CODE OF ETHICS

The Code of Ethics of the American Society for Clinical Laboratory Science sets forth the principles and standards by which Medical Laboratory Professionals and students admitted to professional education programs practice their profession.



*"It is important to remember that there are a lot of really smart, caring, committed, professional healthcare workers who do not have MD degrees."*

*~Dr. Georgette Dent*





## I. DUTY TO THE PATIENT

Medical Laboratory Professionals' primary duty is to the patient, placing the welfare of the patient above their own needs and desires and ensuring that each patient receives the highest quality of care according to current standards of practice. High quality laboratory services are safe, effective, efficient, timely, equitable, and patient-centered. Medical Laboratory Professionals work with all patients and all patient samples without regard to disease state, ethnicity, race, religion, or sexual orientation. Medical Laboratory Professionals prevent and avoid conflicts of interest that undermine the best interests of patients.

Medical Laboratory Professionals are accountable for the quality and integrity of the laboratory services they provide. This obligation includes maintaining the highest level of individual competence as patient needs change yet practicing within the limits of their level of practice. Medical Laboratory Professionals exercise sound judgment in all aspects of laboratory services they provide. Furthermore, Medical Laboratory Professionals safeguard patients from others' incompetent or illegal practice through identification and appropriate reporting of instances where the integrity and high quality of laboratory services have been breached.

Medical Laboratory Professionals maintain strict confidentiality of patient information and test results. They safeguard the dignity and privacy of patients and provide accurate information to patients and other health care professionals. Medical Laboratory Professionals respect patients' rights to make decisions regarding their own medical care.



## II. DUTY TO COLLEAGUES

### AND THE PROFESSION

Medical Laboratory Professionals uphold the dignity and respect of the profession and maintain a reputation of honesty, integrity, competence, and reliability. Medical Laboratory Professionals contribute to the advancement of the profession by improving and disseminating the body of knowledge, adopting scientific advances that benefit the patient, maintaining high standards of practice and education, and seeking fair socioeconomic working conditions for members of the profession.

Medical Laboratory Professionals accept the responsibility to establish the qualifications for entry to the profession, to implement those qualifications through participation in licensing and certification programs, to uphold those qualifications in hiring practices, and to recruit and educate students in accredited programs to achieve those qualifications.

Medical Laboratory Professionals establish cooperative, honest, and respectful working relationships within the clinical laboratory and with all members of the healthcare team with the primary objective of ensuring a high standard of care for the patients they serve.



## III. DUTY TO SOCIETY

As practitioners of an autonomous profession, Medical Laboratory Professionals have the responsibility to contribute from their sphere of professional competence to the general well being of society. Medical Laboratory Professionals serve as patient advocates. They apply their expertise to improve patient healthcare outcomes by eliminating barriers to access to laboratory services and promoting equitable distribution of healthcare resources.

Medical Laboratory Professionals comply with relevant laws and regulations pertaining to the practice of Clinical Laboratory Science and actively seek, to change those laws and regulations that do not meet the high standards of care and practice.

*"The patient needs us to stand in the gap, to advocate for their quality of care, to ensure their safety. To us they are not just tubes and numbers. They are our children, our parents, our grandparents, our neighbors, our friends... OUR patients."*

*The history of American Society for Clinical Laboratory Science reflects our professional association's many contributions to the profession and practitioners in clinical laboratory science.*

# Society History

**ASMT Organized in 1933, Incorporated in 1936:** American Society of Medical Technologists sought to establish credibility by being known as a society holding the highest standards. Thus, members were required to be certified by the Board of Registry of the American Society of Clinical Pathologists (ASCP). For ASMT, the 1930s saw the inception of a journal, the establishment of a Constitution and Bylaws, the emergence of state charters, and educating the public about the profession.

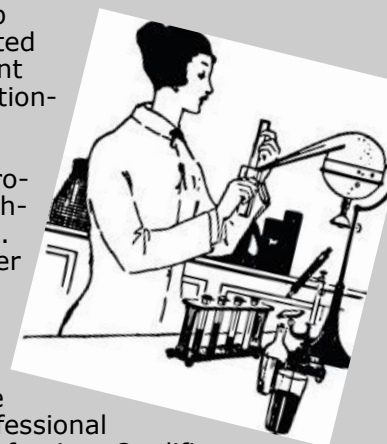
**1940s Advocacy, Education and Credentials:** AMST sought professional independence, representation in credentialing with the Board of Registry of ASCP and the accreditation of education programs by the Board of Schools. Membership grew, largely because of the Society's advocacy of properly educated and credentialed personnel. In 1947 ASMT held its first independent convention. Laboratory personnel were in short supply, and educational programs grew.

**1950s Advancement of the Profession:** Attempts to achieve professional status with the Civil Service and the Armed Forces, together with attempts to upgrade educational/certification qualifications. The advancement of scholarship in the field, e.g., via the first paper on quality control, and the formation of the ASMT Education and Research Fund to advance research efforts were major contributions.

**1960s Controversy and Growth:** Many believed functions of the ASCP Board of Schools and Board of Registry impinged on the professional roles of ASMT members and others in the profession. Qualifications for the clinical laboratory scientist included a baccalaureate degree (1962) and a new categories of laboratory professionals emerged such as the Certified Laboratory Assistant (CLA) with one year of training, and the Medical Laboratory Technician (MLT) with a two-year associates degree or two years of formal training. Specializations in chemistry, microbiology, hematology, and blood banking were created. ASMT joined the International Association of Medical Laboratory Technologists and for over four decades was looked to by other nations as the standard for laboratory science associations.

**1977 — 1992 Evolution and Expansion:** With the new and increasing technology the laboratory offered greater and faster results for the medical profession. The clinical laboratory scientist assumed greater responsibilities in technology, quality assurance, management, supervision, education and research.

**2018 Expertise in Demand:** The issue of Workforce Shortage in Medical Laboratory Science has been brought to Congress. The knowledge of testing interpretation and strategies is seen as essential in healthcare, thus the MLS have more consultative roles. The first Doctor of Clinical Laboratory Science (DCLS) graduates from the Rutgers DCLS program.





## Political Influence and Professional Development

The **1980s** saw more involvement in national politics and an unfulfilled attempt to unify two laboratory organizations, ASMT and AMT. The Clinical Laboratory Educators Conference (CLEC) was initiated, as well as the Legislative Symposium, the only one of their kind, sponsored by a laboratory organization. ASMT also moved its offices from Houston, Texas, to Washington, D.C., to become more involved in influencing legislation to advance the profession.

## Working Together

The **1990s** saw ASMT become ASCLS and join forces with the American Association for Clinical Chemistry (AACC) in presenting one of the largest annual meetings of laboratorians in the country. It provided input to the National Labor Relations Board, which in 1995 recognized medical technologists among its "professional employees."



*Legislative Symposium:  
ASCLS presence on Capitol Hill.*

## Seven Decades of Contribution

Through the past seven decades, this professional organization has contributed much to the profession: in advocacy, standards setting, education (professional and continuing), personal and professional development, and much more. The American Society for Clinical Laboratory Science (ASCLS) continues today as the pre-eminent laboratory organization representing laboratory personnel and advancing their interests — individually and collectively.

## HISTORY OF JOURNAL NAMES

**1935:** The Bulletin of the American Society of Clinical Laboratory Technicians

**1936:** The American Journal of Medical Technology of the American Society of Medical Technologists (49 volumes)

**1984:** Journal of Medical Technology (a joint publication of American Medical Technologists and the American Society for Medical Technology).

**1988 to present:** Clinical Laboratory Science

## HISTORY OF SOCIETY NAMES

**1933:** American Society of Clinical Laboratory Technicians (ASCLT)

**1936:** American Society of Medical Technologists (ASMT)

**1973:** American Society for Medical Technology (ASMT)

**1993 to present:** American Society for Clinical Laboratory Science (ASCLS)

Be The  
Change



# Membership Benefits

ASCLS provides many opportunities to enhance your professional knowledge, maintain your certification or maintain your licensure through P.A.C.E.® (Professional Acknowledgment for Continuing Education).

**P.A.C.E.**

Members have access to webinars, articles, and online courses on topics of critical interest — programs that are reviewed regularly for educational content, relevancy to the profession.

When you join or renew you may select an ASCLS Certification Maintenance Membership to get P.A.C.E.® approved online continuing education. For more information, click here. \_\_\_\_\_

ASCLS is an important resource for building Clinical Laboratory Science programs in Universities. Recognizing the importance of certification, ASCLS endorses and provides guidance to the National Accrediting Agency for Clinical Laboratory Sciences (NAACLS) in its accreditation efforts of schools which offer Bachelor, Master and Doctorate degrees in Clinical Laboratory Science.

**NAACLS**

*Education*

# Publications

## Clinical Laboratory Science

is an award-winning, quarterly journal featuring articles on the very latest in research, education and government actions affecting the profession.



## ASCLS Today

is our newsletter, is published 10 times a year and provides timely updates on society activities, legislative endeavors, educational topics and region or state highlights.



# Membership Benefits

## Annual Meeting

### [ National ]

At the National Meeting, each Region and State is represented by attending Delegates.

As a Society, each Committee reports on accomplishments, the Board of Directors makes important decisions, the House of Delegates votes on leadership and important issues and members are acknowledged during the Awards Ceremony.

It is a time of meeting face-to-face, to make your voice be heard, to get involved and to work together to move the Society forward.

*"Every year, I look forward to learning new things, going new places and seeing old friends."*



Described as the *premier* continuing education *event* in clinical laboratory science, the five-day ASCLS Annual Meeting and Exposition offers cutting-edge scientific and technical workshops and symposiums.

Our members have been able to visit the industry's largest exhibition hall to review the latest trends and technologies in laboratory testing. We meet with vendors who demonstrate new equipment, explain new methodology and share industry news.

ASCLS members receive a substantial discount on fees for registration and exhibits at the Annual Meeting.





# Membership Benefits

## LEGISLATIVE SYMPOSIUM



To ensure effective advocacy, each year ASCLS also holds a Legislative Symposium. Participants learn the manner in which current issues are being addressed within government and are briefed in lobbying skills. Participants also meet with Members of Congress to discuss the issues important to the profession and to advocate for our best interests.



As new laws and regulations bring momentous changes to clinical laboratory science, your ASCLS membership provides you with liaisons to Members of Congress, Federal and state agencies.



Our government affairs team monitors and influences laws and regulations that affect the profession. This dedicated team, coupled with extensive grassroots involvement from the membership, ensures that the concerns of the profession are heard in Congress.

Government Affairs

## Grass Roots Activities

*One of the important benefits to members of ASCLS is our regional, state and local meetings. These gatherings provide scientific and technical continuing education sessions, as well as networking opportunities with local and regional colleagues.*



# Membership Benefits

[www.ascls.org](http://www.ascls.org)



One Voice, One Vision

Home

Communities ▾

Directory ▾

Events ▾

Libraries ▾

Participate ▾

Volunteer ▾

Search

## Browse the Resource Library

Search and find content & media when you need it.

Build a knowledge base of industry best practices, sample documents, spreadsheets, pictures, videos and more.

Search →



ASCLS.org has **INCREDIBLE** resources! Outlines, libraries, blogs, videos and toolkits on Society structure, duties, positions, body of knowledge, vision, goals...  
**AND SO MUCH MORE!**



Search ...

GO

[MEMBER PORTAL](#) | [CE ORGANIZER](#) | [DONATE](#)

MEMBERSHIP ▾

EDUCATION-MEETINGS ▾

P.A.C.E. ▾

COMMUNICATION ▾

CAREERS ▾

ADVOCACY ▾

Clinical Laboratory Science >  
Journal

ASCLS Today

eNewsBytes

The Bench Connection

Social Media

Society News Now

ASCLS Connect  
Community

Advertising and  
Sponsorship

Podcasts

Read or get published!

Latest & trending updates

Society articles—submit one!

Find a Mentor

Urgent issues, Calls to Action

Share ideas and talk nerdy



[Join a Community, read blogs, post blogs, join the discussion](#)



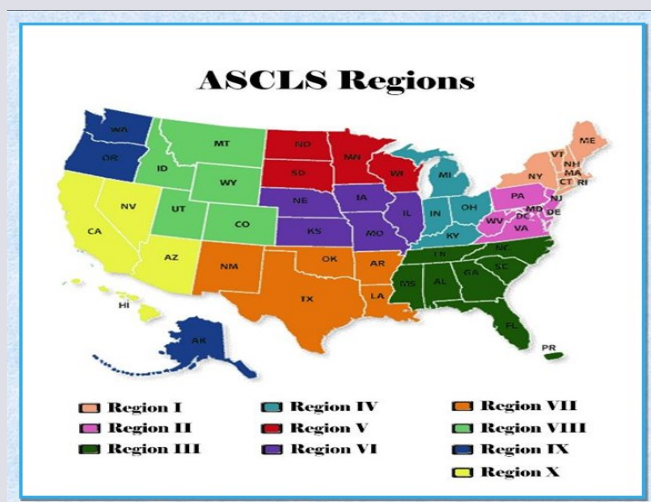


# SOCIETY STRUCTURE



## State Societies and Regions

Members maintain their ASCLS membership through state and local societies. Within these constituent societies, members are able to discuss local and statewide problems, compare and contrast issues, standards and methodologies of their respective laboratories, and stimulate local/regional interest in the profession. Constituent state societies produce journals or newsletters to facilitate communications among their members. Workshops and seminars are sponsored to provide continuing education. State societies also sponsor their own annual meetings, usually held in late winter or spring of each year.



State Societies generally maintain local chapters or districts. This national to chapter structure has proven successful in having the Society address the concerns and needs of its members at every level.

As required by the ASCLS Bylaws, an individual must hold membership at the state and national levels. It is this organizational structure that allows for appropriate channeling of local needs to the national level and national activities and programs back to the individual members.

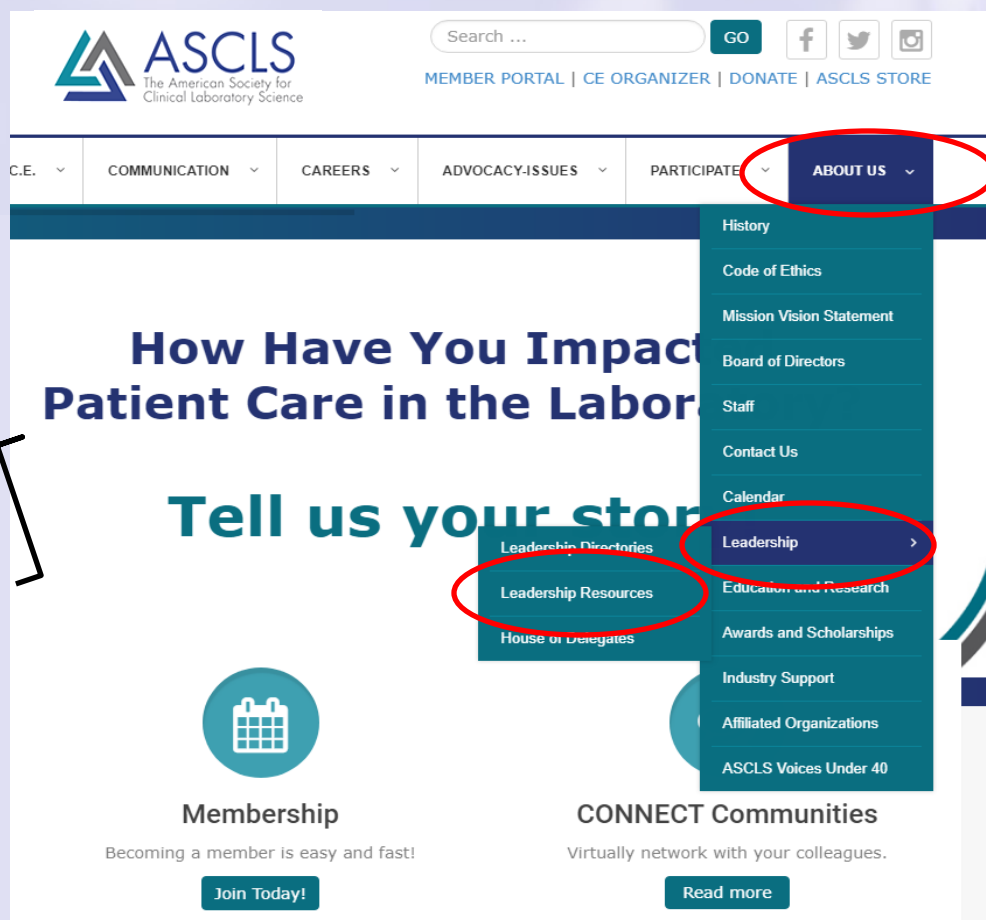
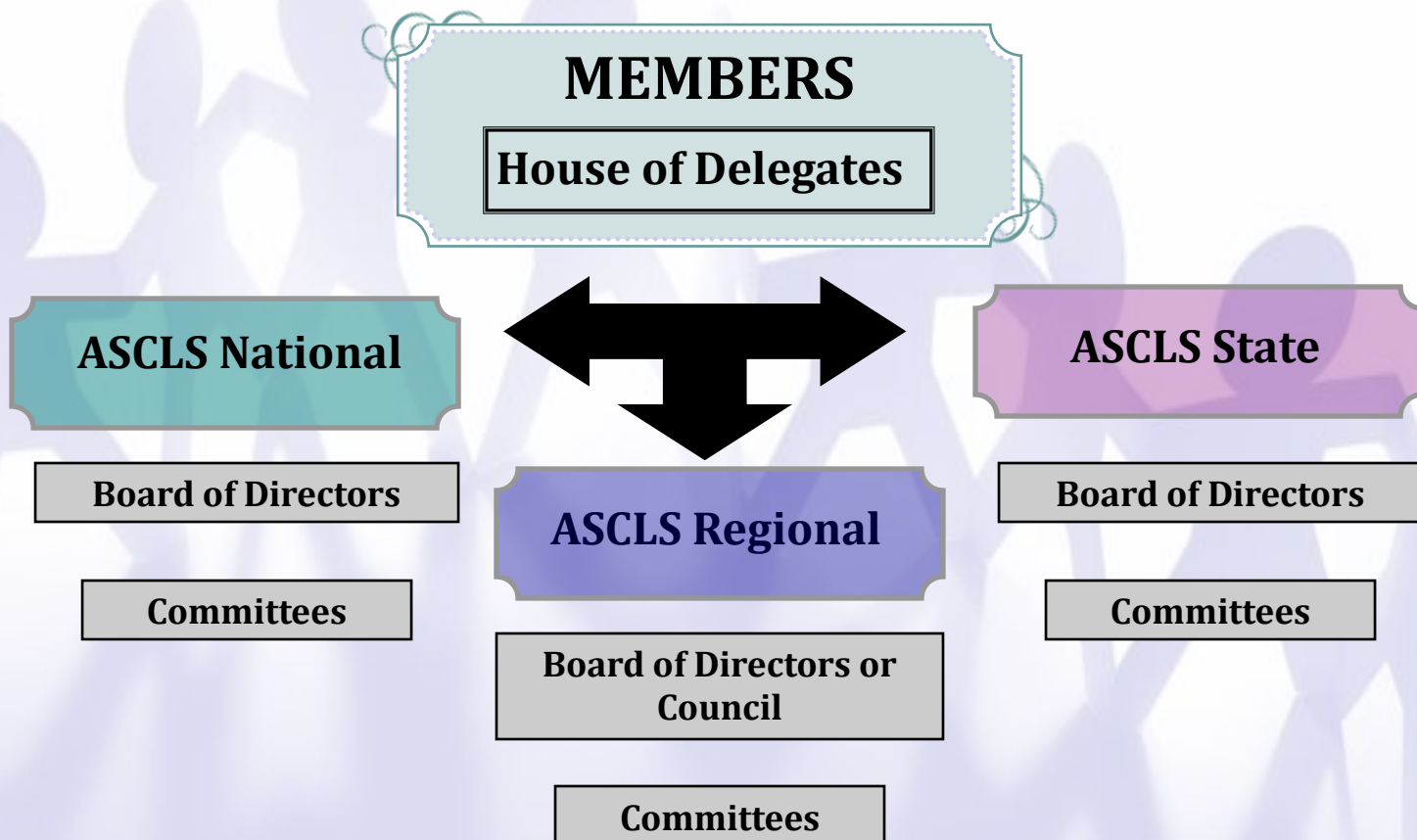
State society dues are used to finance state society activities.

<http://ascls.org/membership/state-society-groups>





# National-to-Chapter



The screenshot shows the ASCLS Member Portal website. The header includes the ASCLS logo, a search bar, and navigation links: MEMBER PORTAL | CE ORGANIZER | DONATE | ASCLS STORE. The main navigation menu is open, showing options like COMMUNICATION, CAREERS, ADVOCACY-ISSUES, PARTICIPATE, and ABOUT US. The ABOUT US dropdown menu is highlighted, showing options like History, Code of Ethics, Mission Vision Statement, Board of Directors, Staff, Contact Us, Calendar, Leadership, Education and Research, Awards and Scholarships, Industry Support, Affiliated Organizations, and ASCLS Voices Under 40. The Leadership option is highlighted. Below the navigation menu, there is a large banner with the text "How Have You Impact Patient Care in the Labor" and "Tell us your story". At the bottom, there are two sections: "Membership" with a "Join Today!" button, and "CONNECT Communities" with a "Read more" button.

# COMMITTEES

## Elected or Appointed Committees

[Abstract and Proposal Review Committee \(APRC\)](#)

[Annual Meeting Steering Committee \(AMSC\)](#)

[Awards Committee](#)

[Body of Knowledge \(BOK\) Committee](#)

[Bylaws Committee](#)

[Clinical Laboratory Science Journal Editor and Reviewers](#)

[Committee on Educational Programs & Initiatives \(CEPI\)](#)

[Diversity Advocacy Council \(formerly Forum for the Concerns of Minorities\)](#)

[Doctorate in CLS Oversight Committee](#)

[Education and Research Fund, Inc. \(E&R\)](#)

[Government Affairs Committee \(GAC\)](#)

[Judicial Committee](#)

[Leadership Academy](#)

[Leadership Development Committee \(LDC\)](#)

[Membership Committee](#)

[Mentorship Committee](#)

[New Professionals and New Members Forum \(NPNMF\)](#)

[Officers](#)

[Nominations](#)

[P.A.C.E.® Committee](#)

[Patient Safety Committee](#)

[Political Action Committee \(PAC\)](#)

[Product Development Committee \(PDC\)](#)

[Promotion of the Profession Committee \(PPC\)](#)

[Student Forum Officers](#)

### GAC

Assists ASCLS in achieving objectives of influencing the formulation of appropriate government policy on health care issues vital to the profession and patient safety.

### BOK

Manages the essential knowledge base of what is recognized and practiced in the profession and relates it to other health professions, curriculums and organizations

### SA

Serves to provide expert consultation and technical reviewers for areas such as examinations, conventions, continuing education, etc...

### AWARDS

Coordinates the publication, description, nomination, selection and presentation of the awards established to recognize members of the Society and profession.

### PDC

Coordinates the document and maintenance of current publications and products, as well as facilitates the creation of new publications and products.

### PAC

Works with the GA Committee to monitor legislation at the Federal, State and Local levels involving laboratory issues. Lobbies for monetary support of our Society's interests on Capitol Hill.

### PSC

Provides resources to promote member understanding of the lab professional's vital role in patient safety.

### MEMBERSHIP

Responsible for recruiting new members into ASCLS. Responsible for the retention of members and reactivation of lapsed members.

### BYLAWS

Examines, and approves appropriate changes by the constitutional codes of constituent societies. Prepares them for member consideration and approval.

### MENTORSHIP COMMITTEE

Responsible for Mentorship program—orienting mentors & mentees, development of mentorship resources.

### STUDENT FORUM

Coordinates the involvement and interest of students of Medical Laboratory Science in the Society.

### P.A.C.E

Serves to administer, authorize and approve continuing education opportunities for Society members.

### POP

Serves to provide the face for the profession. Includes public relations, social media presence, image management and marketing.

**LOGIN**

**AMAZING RESOURCE:**  
<http://www.ascls.org/participate/committees-forums/committees>

"Opportunity around every corner"

# GET INVOLVED—GROW

[www.connect.ascls.org](http://www.connect.ascls.org)

*Connect ASCLS offers many opportunities to grow as a leader and promote our profession.*



## "National-to-Chapter"

Our society operation on a 'National-to-Chapter' structure which affords every member a voice and abundant resources.

*Online Community*  
<https://connect.ascls.org/home>



CONNECT Communities  
Virtually network with your colleagues.

[Read more](#)

## BE A VOICE

Each chapter's voice is represented by their Delegates who vote at the House of Delegates on Society position on important issues, Society Leadership, Society direction and future.

## LEADERSHIP

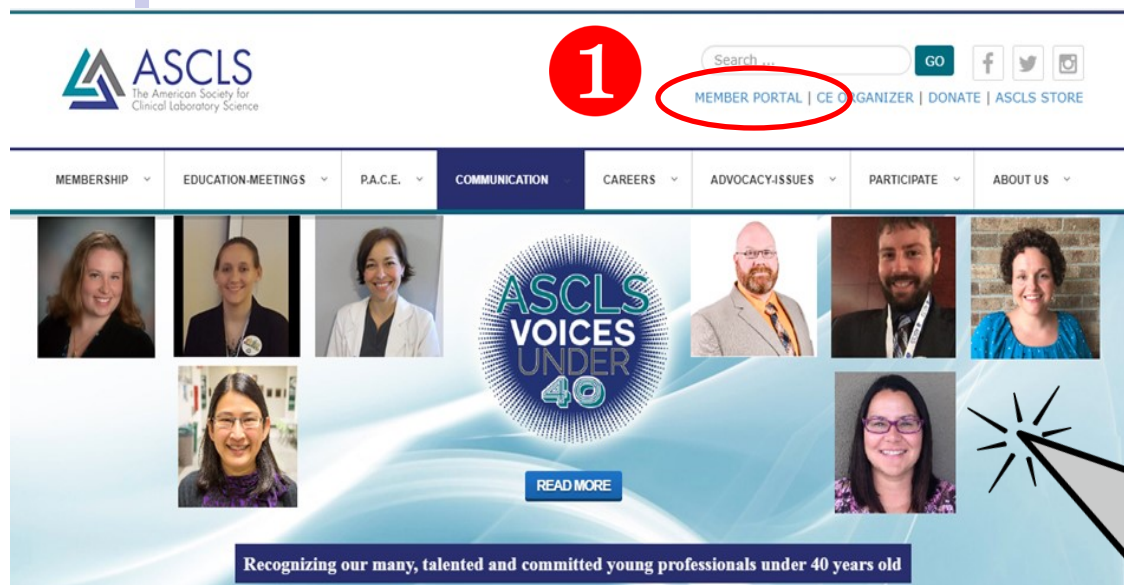
Leadership positions at each level includes: Board of Directors, Council members, President, Vice President, Committee Chairs and Committee Members.

## COMMITTEES

Committees are given 'charges' that affect change in our profession: Be heard by Congress, make recommendations to regulatory bodies, investigate new technology, be a champion for patient safety and create resources & opportunities for our members.



# Getting started...



Our website contains a large body of information, **endless resources** and updates of current issues effecting Medical Laboratory Science.

Membership gives access to valuable resources, member forums, C.E. Organizer, upcoming events, member communities and **MORE!**



Home

Communities ▾

Directory ▾

Events ▾

Libraries ▾

Participate ▾

Volunteer ▾

search

## Join the Discussion

Ask or answer questions with your peers.

Our dynamic discussion groups provide the tools you need to communicate with leaders and partners in your field.

[Get Started →](#)

## Create your profile

4

Lead Technologist, --

[My Profile ▾](#)[My Connections ▾](#)[My Contributions ▾](#)[My Account ▾](#)

Invite me to volunteer when opportunities match my expertise?

☒ Yes

### Volunteer Bio

I am the Lead Scientist and Point of Care Coordinator at a rural Critical Access Hospital in Idaho. Of the 13 years I have been an ASCLS member, I've been involved at the State and Regional levels. While I am still learning the ins and outs of ASCLS leadership, I work hard, communicate well, stay organized and follow through on commitments.

### Willingness to Travel

Regional ▾

### My Industry Experience

11-15 Years Professional Experience ▾

### Contact Details

### My Organizational Volunteering

[My Profile ▾](#)[My Connections ▾](#)[My Contributions ▾](#)[My Account ▾](#)**Customize your communication****Request contacts****Find other members in your area****Join Communities****View badges, awards and stats**

Contacts

Networks

Communities

Summary

Achievements

List of Contributions

Inbox

Privacy Settings

Email Preferences

RSS Feeds

Community Notifications

Discussion Signature



One Voice, One Vision

[Home](#)[Communities](#)[Directory](#)[Events](#)[Libraries](#)[Volunteer](#)**Opt in!**

## Opting in to the ASCLS Volunteer Pool

Being part of the ASCLS volunteer pool means you are interested in learning more about ASCLS and its activities.

Opting in is easy! With one click, you'll be added to our pool of volunteers and interests.

Once opted in, you can of course suspend your opt-in request at any time. Just set the *Invite me to volunteer* to 'Yes' or 'No' on your volunteer profile to no longer receive invitations.

[Click here to opt in to the Volunteer Pool](#)

[My Volunteer Profile](#)[About](#)[Volunteer Opportunities](#)[Opt In to the Volunteer Pool](#)**5**

One Voice, One Vision

[Home](#)[Communities](#)[Directory](#)[Events](#)[Libraries](#)[Participate](#)

## Open Forum

[Settings](#)[Community Home](#)[Discussion](#) 1K[Library](#) 60[Blogs](#) 8[Events](#) 0[Members](#) 7.5K

### Latest Discussion Posts

[Add](#)

### Latest Shared

**RE: MLS vs. MLT performance**By: [Tim Randolph](#), 4 hours ago

Thank you Chad for your comments and your question. I am currently in the process of formal education. I probably should have used the word "MLT" instead of "MLT performance".

ASCLS  
The American Society for  
Clinical Laboratory Science

One Voice, One Vision

[Home](#)[Communities](#)[Directory](#)[Events](#)[Libraries](#)[Participate](#)[Volunteer](#)

## Open Forum Community Blog

[Settings](#)[Community Home](#)[Discussion](#) 1K[Library](#) 60[Blogs](#) 8[Events](#) 0[Members](#) 7.5K**#IamASCLS Vathani Logendran**By [Andrea Hickey](#) posted 05-16-2017**Post a blog****Join a discussion**





# *Be the Voice, Be the Vision*



#iamascls



*Remember we are in this together.  
ASCLS is **family** and we welcome you to the  
organization. We encourage you to be  
courageous, get involved in ASCLS. Together  
we can **drive change** to **make a difference**.*

